

ELASTIC, WATER PERMEABLE SURFACING SYSTEMS FOR RIDING FACILITIES AND HORSE FARMS

made from recycled rubber granules



KOMFORT^{EX}



Advantages and properties

Neat solutions for the health and well-being of your horses

Our KOMFORTEX® surfaces feature high thermal insulation against cold from the ground in indoor & outdoor areas and long-term resistance to urine. They are frost-proof and weather-resistant and, above all, permeable to water. KOMFORTEX® flooring systems also provide a surefooted surface with positive slip-resistance characteristics, reducing accidents and the risk of injury without negative effects on the hoof mechanism. The high elasticity of the surfaces improves circulation and hoof growth. The noise-reducing properties of KOMFORTEX® products minimize stress resulting from noise in the stable, which has a positive effect on the health of the horses.



Approved quality
DLG Fokus test



Weather-proof and frost-proof
Insulating against cold from the ground



Improved surefootedness
due to softness and elasticity



Sound reducing properties
better stable atmosphere due to less noise



High slip resistance
non-slip surface prevents injuries from
horses and riders



Long-term resistance to urine



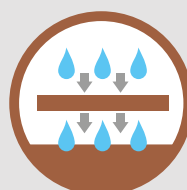
Ideal in preventing rheumatic illnesses
joint-gentle flooring



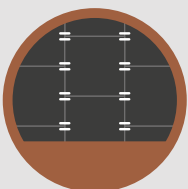
Environment-friendly
Non-toxic, TÜV-tested, recyclable materials



Long shelf life
with almost every type of shoeing



Permeable to water
additional drainage at the bottom side



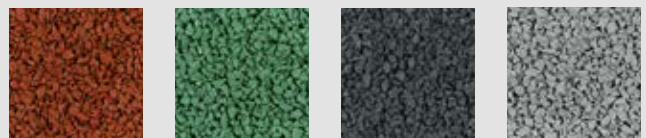
High dimensional stability
due to pre-installed connectors at
KOMFORTEX® elastic slabs, safe and
H-paver slabs



Different shapes and colours
for optimum design variety



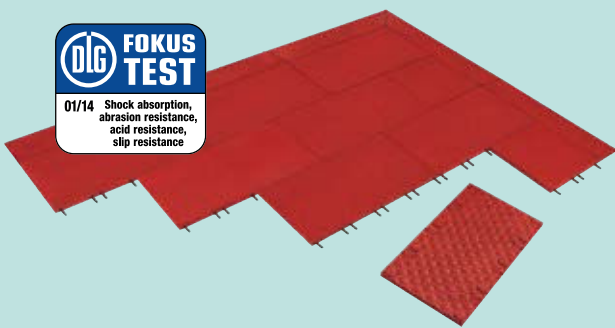
Easy cutting & installation
cost-efficient installation on drainage-
capable, unbounded or bounded subgrade,
bonding is possible



Surfacing systems



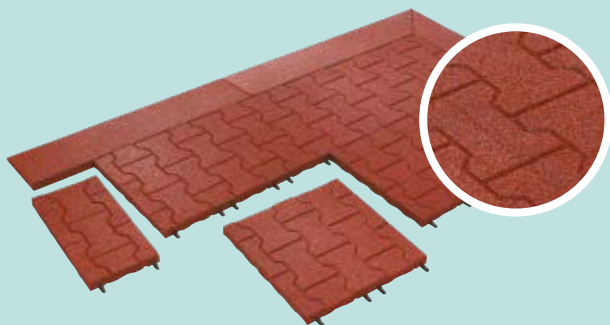
for paddocks, open and free stables, horse boxes with drainage in the substructure, connection and washing places:



KOMFORTEX® elastic slab

Dimensions	length x width x thickness
	1,000/500 x 500 x 40 mm or 500 x 500 x 30 mm
Area weight	35.6 kg/m ² (40 mm) 26.4 kg/m ² (30 mm)
Colours	red/green/black/grey

for stable alleys, paddocks, connection and washing areas:



KOMFORTEX® H-paver surfacing slab

Dimensions	length x width x thickness 500 x 500 x 40 mm
Area weight	36.0 kg/m ²
Colours	red/green/black/grey

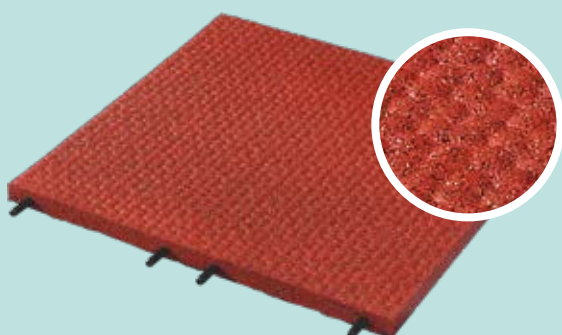
for stable alleys, paddocks, connection and washing areas:



KOMFORTEX® Decor (with paving stone-look)

Dimensions	length x width x thickness 500 x 500 x 40 mm
Area weight	36.0 kg/m ²
Colour	red

for paths, open and free stables with steeper slopes:



KOMFORTEX® Safe (with hammer mark texturing)

Dimensions	length x width x thickness 500 x 500 x 40 mm
Area weight	36.0 kg/m ²
Colour	red

for paths, horse walkers, open and free stables,
connection and washing areas:



KOMFORTEX® elastic pavers

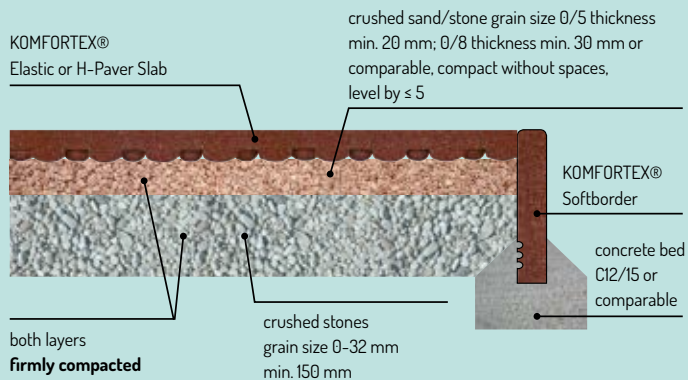
Dimensions	full block: 200 x 165 x 43 (35 pcs./m ²) half block: 100 x 165 x 43 (4 pcs./lfm) starter: 200 x 140 x 43 (5 pcs. / lfm)
Area weight	42.0 kg/m ²
Colours	red, green, black



Preparation of subsurface

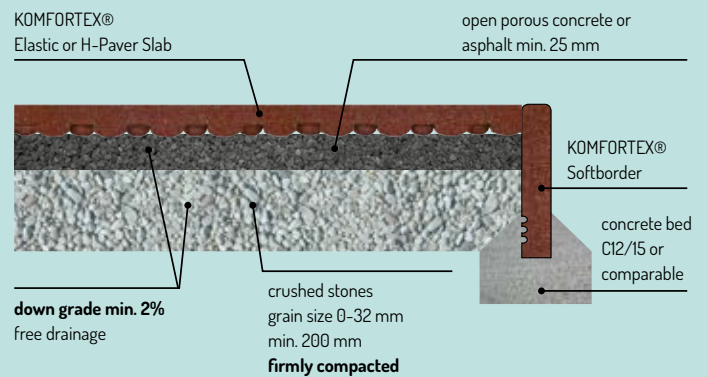
Preparation of subsurface

KOMFORTEX® floor coverings can be installed both on unbounded or bounded subgrades.



Preparation of **BOUNDED** subgrade

Preparation of **UNBOUNDED** subgrade



The basement is taken off till attended depth plus thickness of the surfacing system. A properly prepared subgrade is very important before installing the system. A flexible edge banding (e.g. KOMFORTEX® Softborder) is recommended.

KOMFORTEX® elastic slabs have excellent drainage properties. The subsurface below them (in particular also bounded base layers) must therefore provide sufficient drainage as well. Paved surfaces (such as concrete or asphalt) must be level with a slope of approx. 2% and have adequate takeoff drains. Any depressions greater than 3 mm in depth which can collect water must be leveled off by suitable materials.

Storage of KOMFORTEX® products

Like other elastomeric materials, KOMFORTEX® products absorb heat when exposed to direct sunlight. Their surface temperatures can be higher than asphalt surfaces exposed to the same conditions. KOMFORTEX® products should be installed and stored in shady areas if possible to avoid overheating.

KOMFORTEX® products should normally be stored in dry areas at constant temperature above 10°C. If stored below 10°C, store the slabs at the installation site temperature ($> 10^{\circ}\text{C}$) for at least 2 hours before installation. Important note: Adhesive cements must be stored at all times in dry locations above 0°C. To avoid colour variations due to differences in sunlight exposure, leave the UV protection film on the products as supplied until just prior to installation.









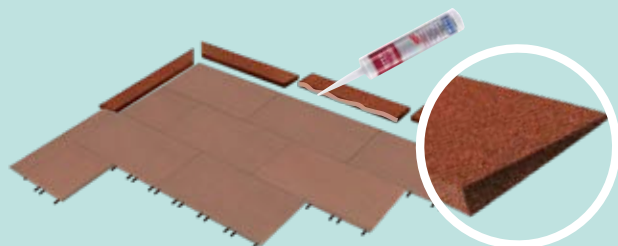


Profiles & borders

Useful accessories for KOMFORTEX® floor coverings

KOMFORTEX® edge and corner profiles are ideal for creating stumblefree borders around tiled surfaces, whereas KOMFORTEX® Softborder is the ideal edging for flooring systems.

edgings for rubber flooring on concrete or asphalt surfaces (must be dowelled or glued on)



KOMFORTEX® edge and corner profiles

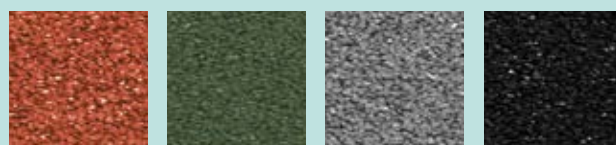
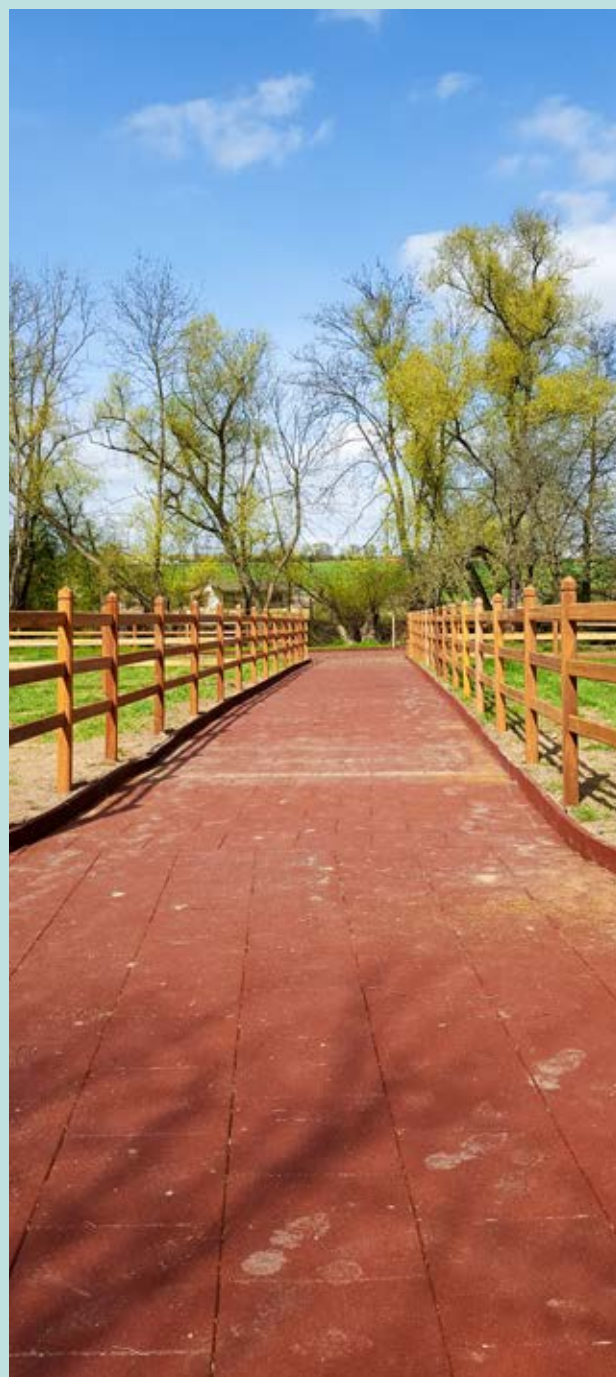
Dimensions	length x width x thickness
	edge profile: 1,000 x 250 x 40/10 mm or 1,000 x 250 x 30/10 mm corner profile: 1,000 x 250 x 40/10 mm or 1,000 x 250 x 30/10 mm
Weights	edge profile: 5.8 kg/pcs. (40/10 mm), 4.2 kg/pcs. (30/10 mm) corner profile: 5.0 kg/pcs. (40/10 mm), 3.9 kg/pcs. (30/10)
Colours	red/green/black/grey

Edgings for rubber flooring on unpaved ground (must be set in concrete).



KOMFORTEX® Softborder

Dimensions	length x width x thickness
	1,000 x 250 x 50 mm
Weight	11.0 kg/pcs.
Colours	red/green/black/grey





Riding arena border

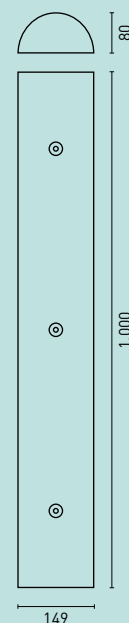
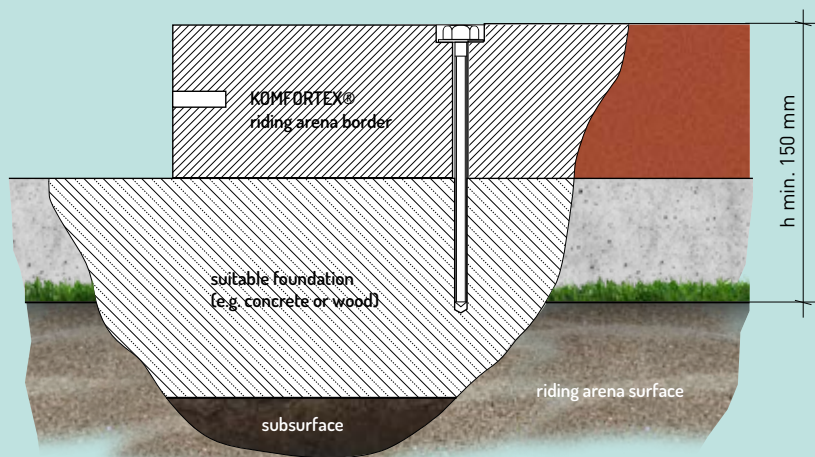
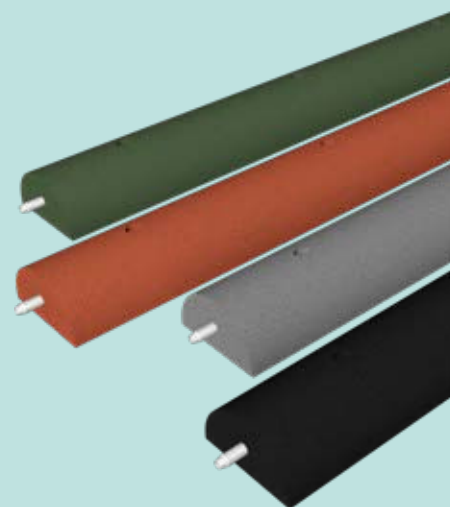
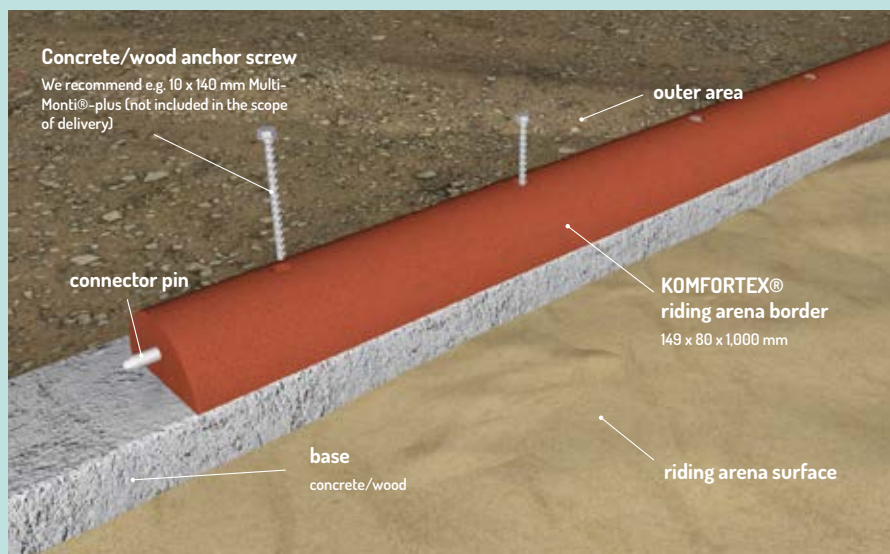
Reducing the risk of injury for horses and riders

KOMFORTEX® riding arena borders made of elastic recycled rubber granulate offer optimum protection for horse and rider while keeping the riding arena surface in place. They provide a visually clean solution as a boundary for riding arenas and can be quickly installed at any time in a concrete or wooden foundation using screw anchoring.

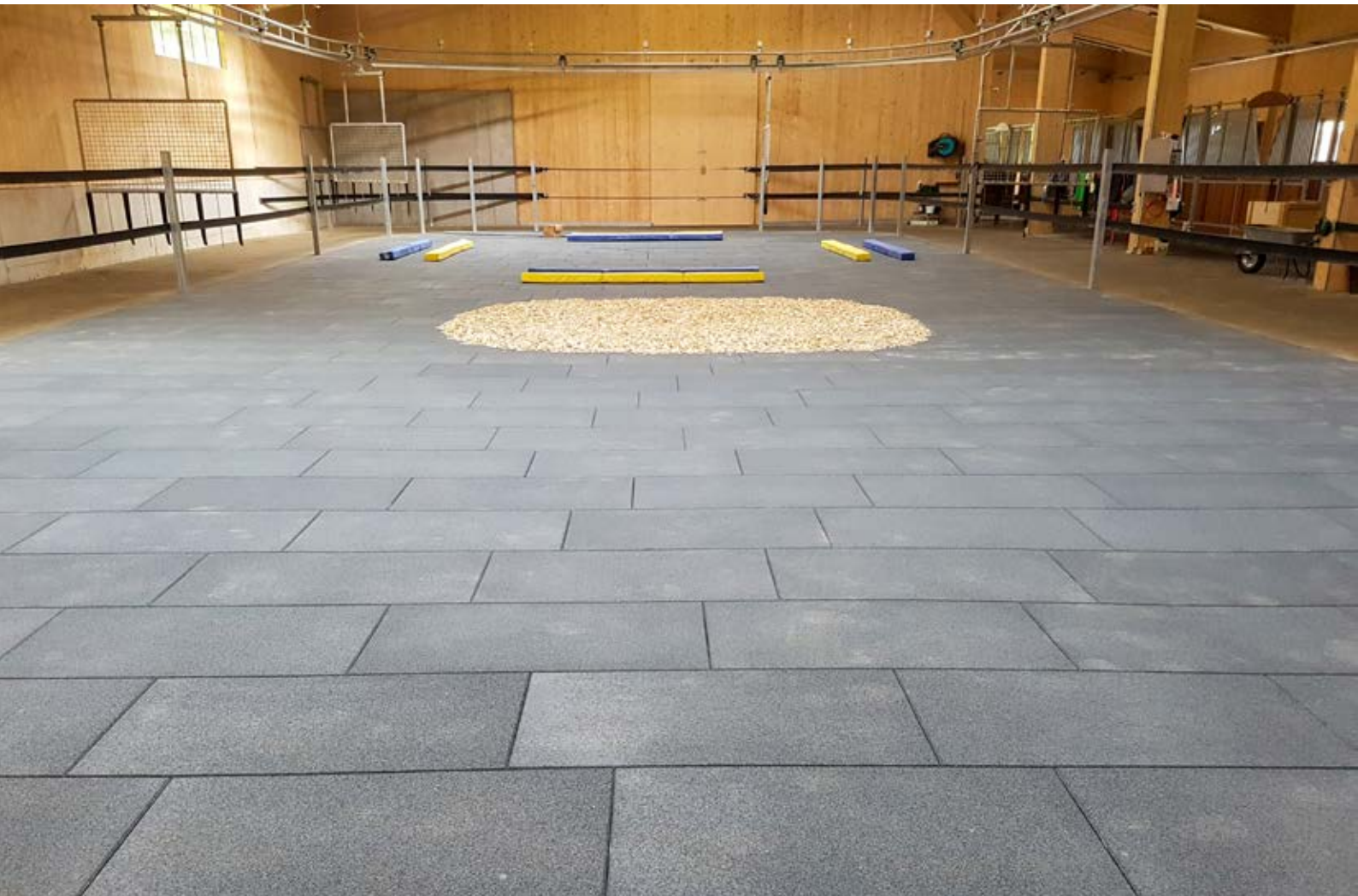
KOMFORTEX® riding arena borders are also the ideal solution for bringing existing or outdated riding arenas up to the latest safety standards.

KOMFORTEX® riding arena border

Although the KOMFORTEX® riding arena border is extremely stable, it can be easily processed due to its granular structure. The individual elements can be shortened to the desired size using a standard jigsaw. Cutting the element ends to any required angle is also quick and easy in this way. There are no limits to the design of the riding arena corners.



Cutting to any length or angle possible!







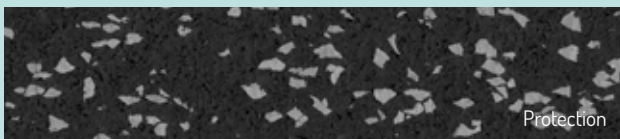
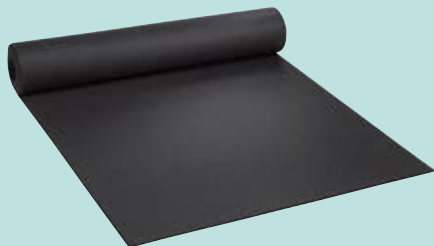
Wall protection

Useful accessories for KOMFORTEX® floor coverings

KOMFORTEX® wall protection minimizes the risk of injuries and protects flooring from damage.

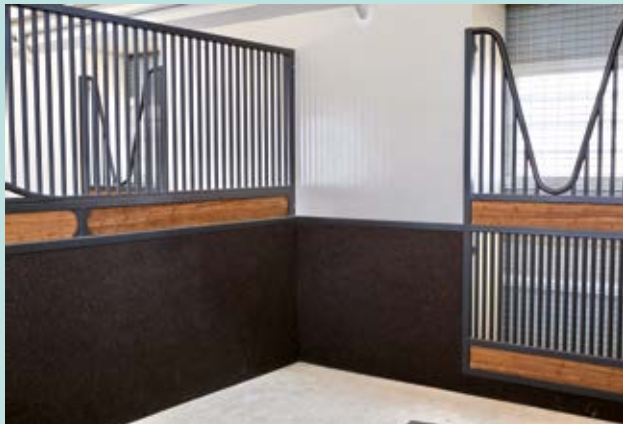
KOMFORTEX® wall protection (rolls)

KOMFORTEX® protection and variant are robust, easy-care and moisture-proof elastic coverings that are ideal for protecting walls in horse boxes. The thickness of 8 – 12 mm of this material, which comes in rolls, protects the walls of the box and reduces the risk of injuries to the horses. KOMFORTEX® protection and variant can be mounted by gluing or screws.



KOMFORTEX® Protection & Variant (rolls)

Dimensions	roll width x thickness x roll length
	1,500 x 8 x 15,000 mm
	1,500 x 10 x 12,000 mm
	1,500 x 12 x 10,000 mm
Area weight	8 mm: 8.4 kg/m²
	10 mm: 10.5 kg/m²
	12 mm: 12.6 kg/m²
Colours	protection: black/blue, black/red, black/grey
	variant: black/multi-coloured





Elastic, water-permeable surfacing systems for riding facilities and horse farms
made of recycled rubber granules

KRAIBURG Relastec GmbH & Co.KG
Fuchsberger Straße 4 · D-29410 Salzwedel

Sales:
Tel. +49 (0) 8683 701 -199 or -156 or -145
Fax +49 (0) 8683 701 -4199 or -4156 or -4145
komfortex@kraiburg-relastec.com
www.kraiburg-relastec.com/komfortex

All information provided is subject to change.
© KRAIBURG Relastec GmbH & Co. KG 2021

